

Adjusting Number of Variables Allocated

Introduction

In some circumstances, a user may need to adjust the number of variables allocated on the controller. For example, your controller may be set up to allow the use of 128 position variables and your programs require 150. This document explains the procedure to adjust the number of different variable types you can use on the controller.

Procedure

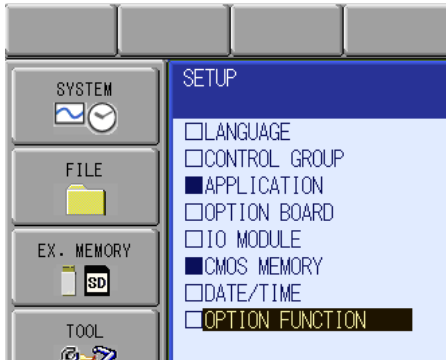
1. **Boot the System into Maintenance Mode** by holding the Main Menu key when powering on the system.

1.1. Change the security level to SAFETY

1.2. Select SYSTEM → SETUP →

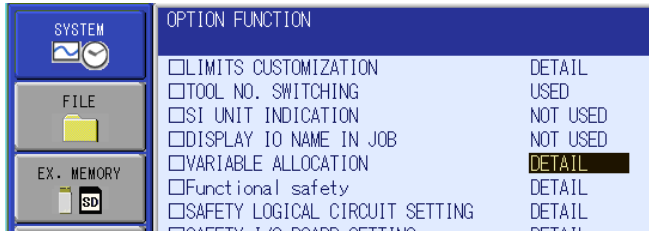


1.3. Move the cursor to OPTION FUNCTION and press SELECT.

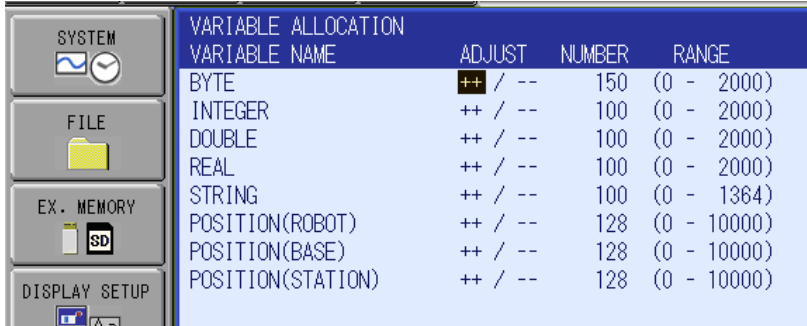


This document captures ideas, experiences, and informal recommendations from the Yaskawa Partner Support team. It is meant to augment – not supersede manuals or documentation from motoman.com. Please contact the Partner Support team at partnersupport@motoman.com for updates or clarification.

1.4. Move the Cursor to VARIABLE ALLOCATION and press SELECT

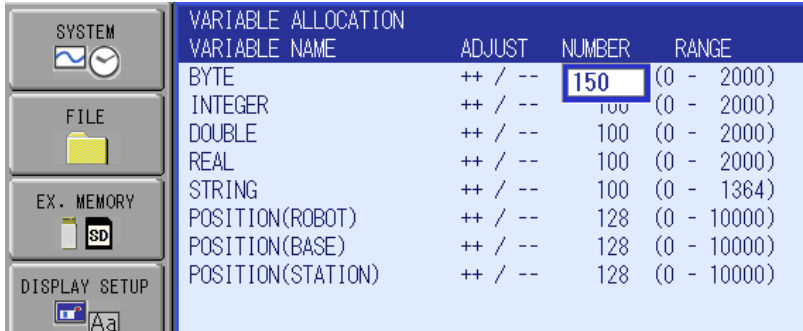


1.5. Selecting the ++ & -- fields on the screen will adjust Byte, Integer, Double Real, & String allocation 50 per selection. Position, Base & Station will adjust 64 per selection. The range values may change as allocation changes. The controller has a finite amount of memory for variables.



This document captures ideas, experiences, and informal recommendations from the Yaskawa Partner Support team. It is meant to augment – not supersede manuals or documentation from motoman.com. Please contact the Partner Support team at partnersupport@motoman.com for updates or clarification.

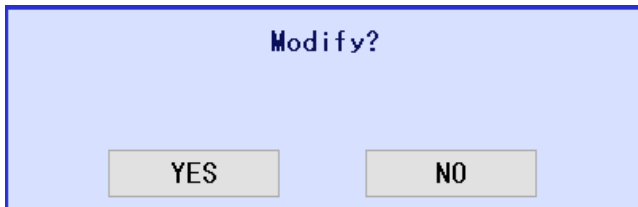
1.6. You also have the option of directly inputting values by moving the cursor to the number column.



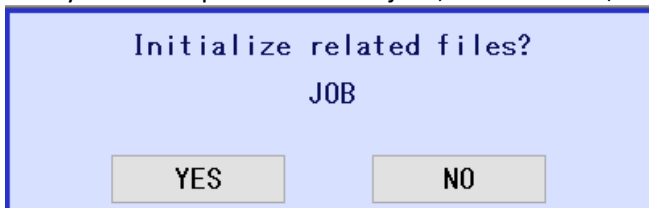
VARIABLE NAME	ADJUST	NUMBER	RANGE
BYTE	++ / --	150	(0 - 2000)
INTEGER	++ / --	100	(0 - 2000)
DOUBLE	++ / --	100	(0 - 2000)
REAL	++ / --	100	(0 - 2000)
STRING	++ / --	100	(0 - 1364)
POSITION(ROBOT)	++ / --	128	(0 - 10000)
POSITION(BASE)	++ / --	128	(0 - 10000)
POSITION(STATION)	++ / --	128	(0 - 10000)

1.7. After allocation is complete, press ENTER. You will then be given a series of confirmation windows.

1.8. Select YES in the MODIFY window.



1.9. Selecting YES on any of the next three confirmation windows will delete your jobs, clear all variable values, and clear all variable names. We only suggest selecting YES on these three windows if the controller is new and no jobs, variable data, or variable names have been created. Note: Some of our systems are preloaded with jobs, variable data, & variable names.



This document captures ideas, experiences, and informal recommendations from the Yaskawa Partner Support team. It is meant to augment – not supersede manuals or documentation from motoman.com. Please contact the Partner Support team at partnersupport@motoman.com for updates or clarification.

Initialize related files?
VAR.DAT

Initialize related files?
VARNAME.DAT

2. Reboot the controller to complete the process.